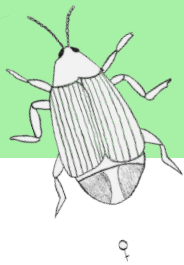
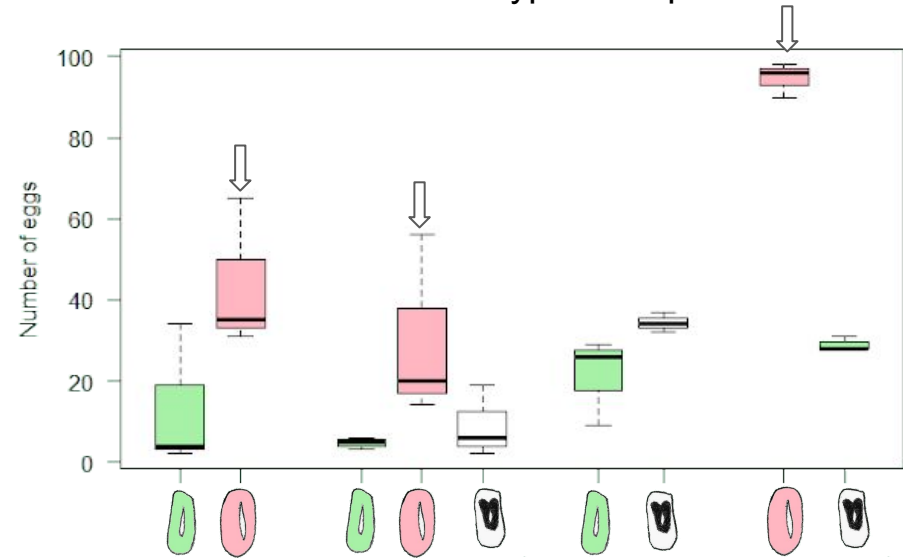
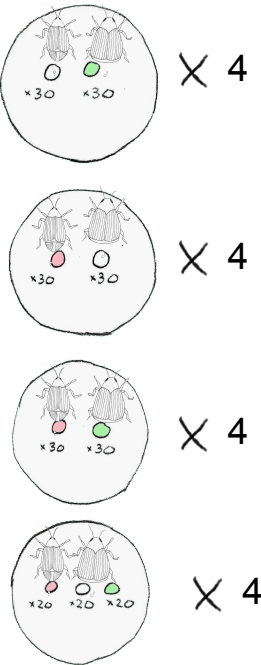


The bean of my bean beetles

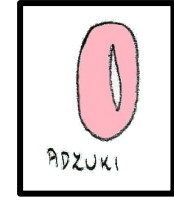


Does the bean beetle *Callosobruchus maculatus* have a favourite bean type in oviposition?

Experiment setup:



And the winner is:



Boxplot showing the amount of eggs per bean type in the different setups

Used emmeans to test each bean up against itself in different setups, the results backup the boxplot that there is a preference

According to our figure and the p-value, beetles have a significant preference for Adzuki beans. We speculate that it is probably due to the beans high nutritious value. The beetles where natal to Mung.

Average bean weight:



Chi square test:
p-value= 2,2e-16 < 0,05 and df= 6