

THE SIZE THAT COUNTS?

Investigating the preferred bean size in egg laying *C.maculatus*.



1. RESEARCH QUESTION

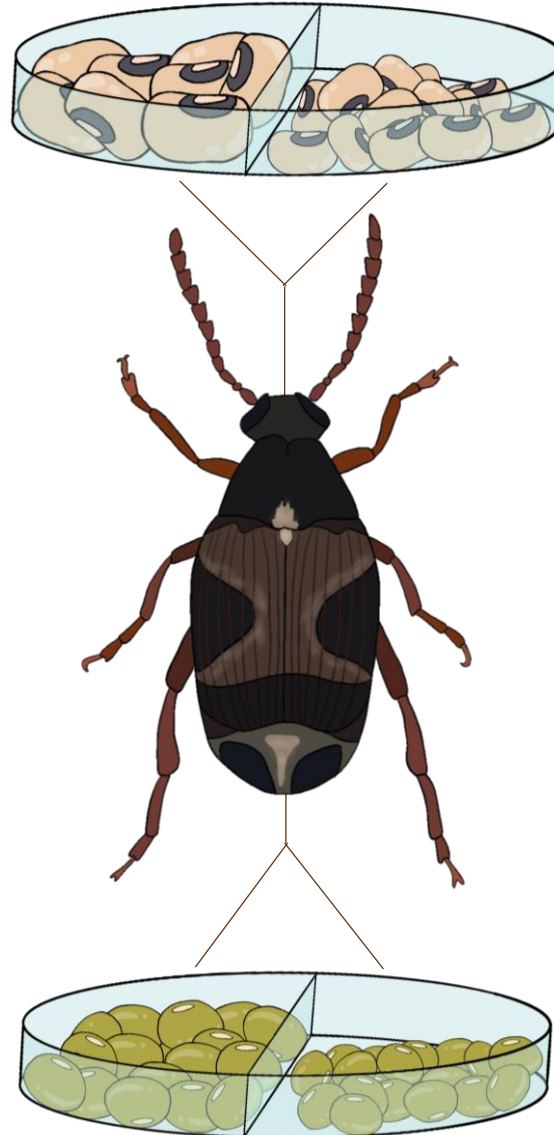
Do female *C.maculatus* have a preference towards bean sizes when laying eggs?

1.1 PREDICTIONS

Our prediction was that the beetles would prefer larger beans when laying eggs.

2. EXPERIMENTAL DESIGN

We filled four divided petri dishes with black eyed peas and four divided petri dishes with mung beans of each size.



3. RESULTS

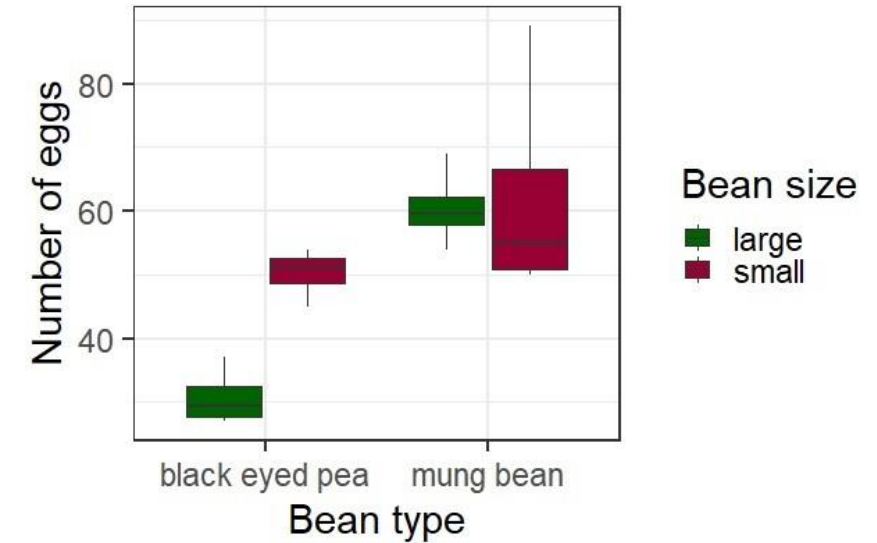


Figure 1: Box plot showing number of eggs laid on each bean type.

4. DISCUSSION

Our studies suggests that the beetles prefer the smaller black eyed peas, but show no preference in the size of mung beans.