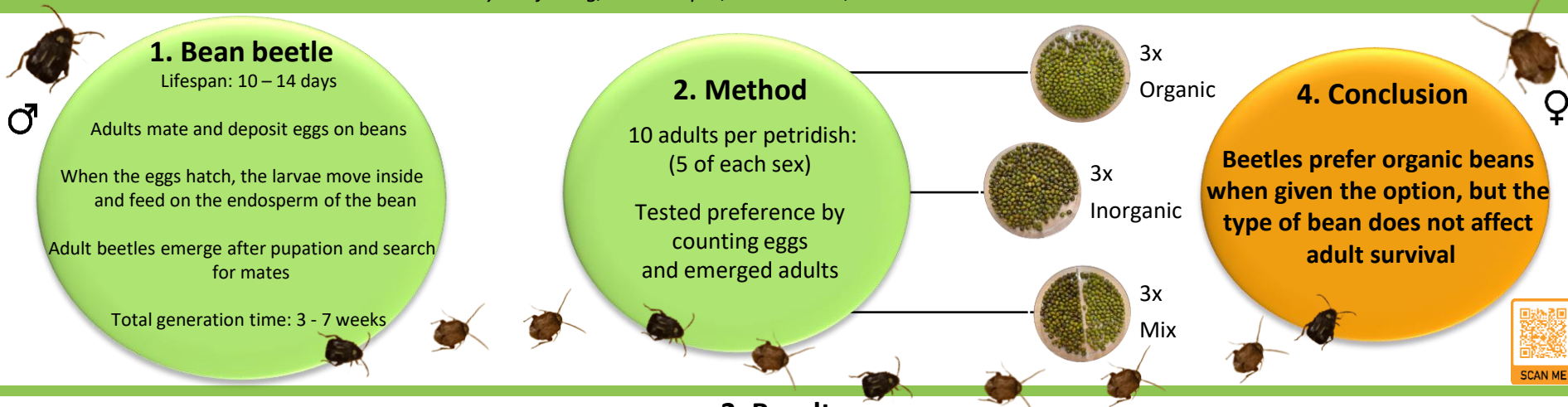


Bean beetles prefer organic – but does it really matter?

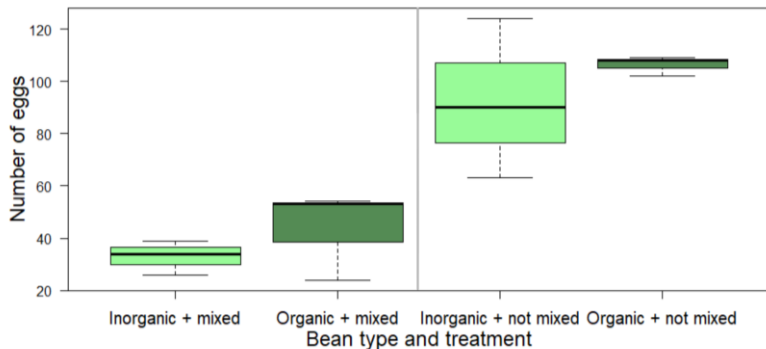


Does the kind of bean (inorganic vs. organic) affect the reproductive success and survival of bean beetles (*Callosobruchus maculatus*)?

By: I. Kjoberg, R.J. Hamper, V. Fredheim, G.R. Gomez and K. Natås



Egg laying in mixed and non-mixed dishes



3. Results

← Figure 1:

On average 10 more eggs were laid in organic beans than inorganic (when given option)
(*glm*, post-hoc test: $z\text{-ratio} = -2.10$, $p\text{-value} = 0.036$, $N = 6$)

Figure 2 →

No significant difference in the number of surviving adults from organic and inorganic beans
(*Chi Square test*: $\chi^2 = 1.86$, $p\text{-value} = 0.17$, $N = 12$)

Adult survival rate

