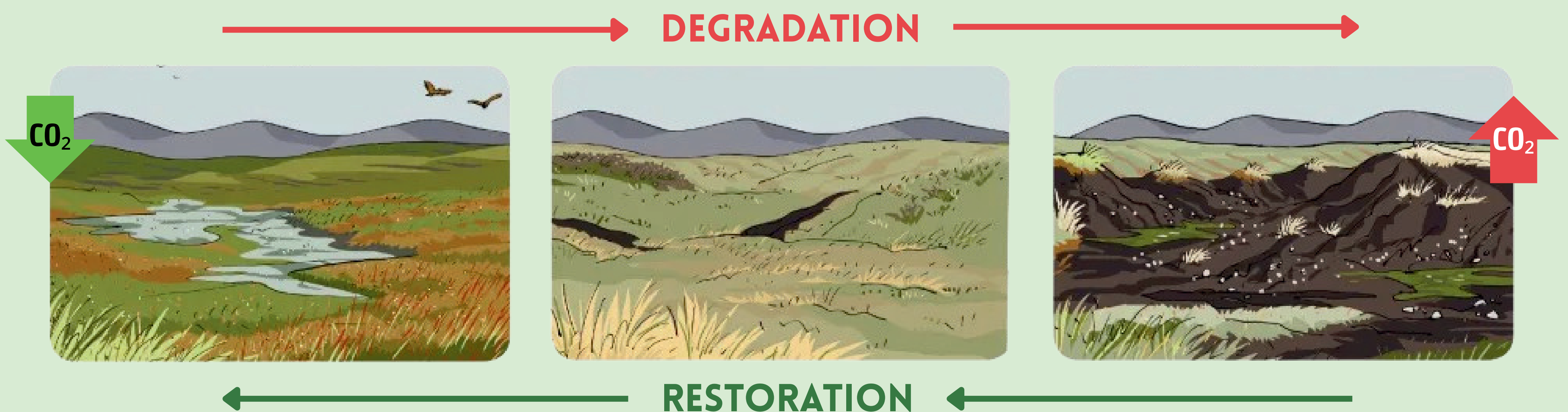
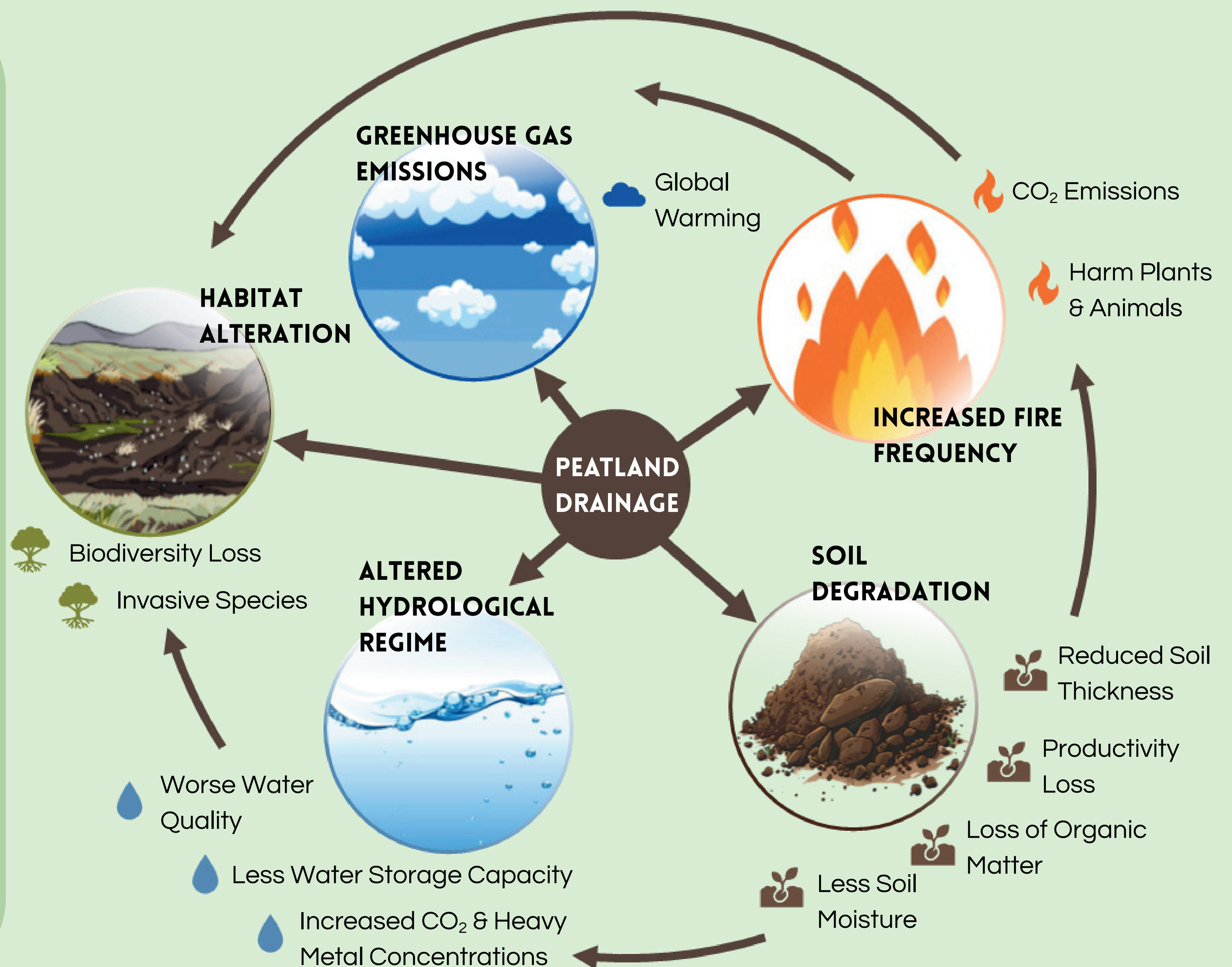


RESTORATION OF PEATLAND

FROM **SOURCE** TO **SINK**

DID YOU KNOW?

- Peatlands store twice as much carbon as all the world's forests combined!
- Degraded peatlands emit more CO₂ than global shipping and aviation combined
- Peatlands are responsible for 25% EU agriculture emissions
- Peatlands provide vital habitats for specialized species like carnivorous plants



- When drained, peatlands become major sources of greenhouse gases.
- Restoration reverses this by turning them back into carbon sinks.
- Invasive plants outcompete natives, delaying ecological recovery.
- Expectations of restoration are healthy peatlands, reality is altered species composition.
- Scotland has restored 350 km² of degraded peatland since 2012.



215.4

Aakervik, Banshoya, Dorrat, Leippert, Skahjem-Helleren, Tungevåg

REFERENCES:

<https://moorekt8404.medium.com/peatland-restoration-and-rewetting-a06fd9e851a>

Figures taken from canva.com and <https://www.grida.no/resources/12536>

(credit to: Nieves Lopez Izquierdo)

For full reference list see the poster paper

